

## How to access WLAN under Linux:

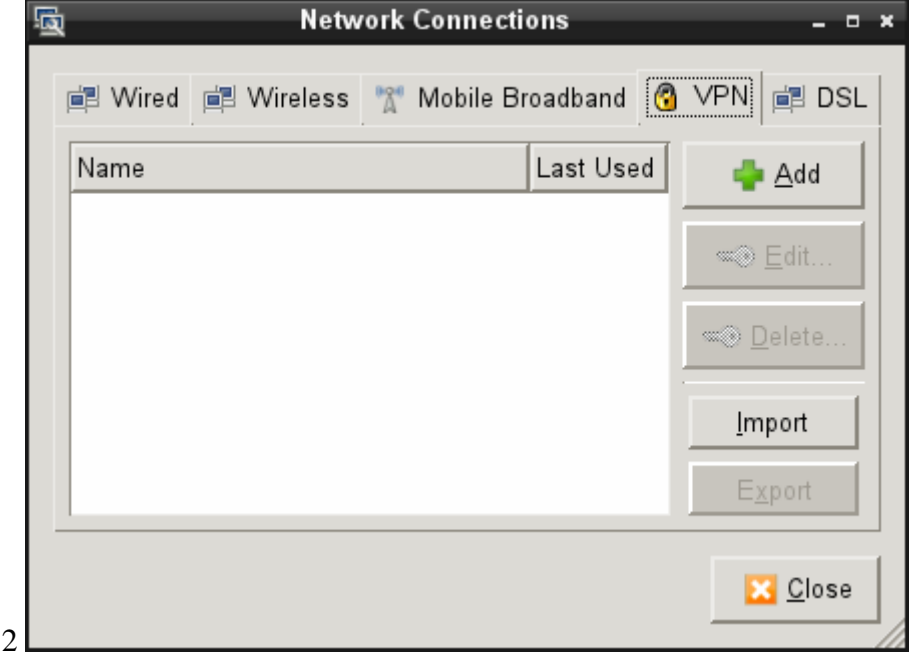
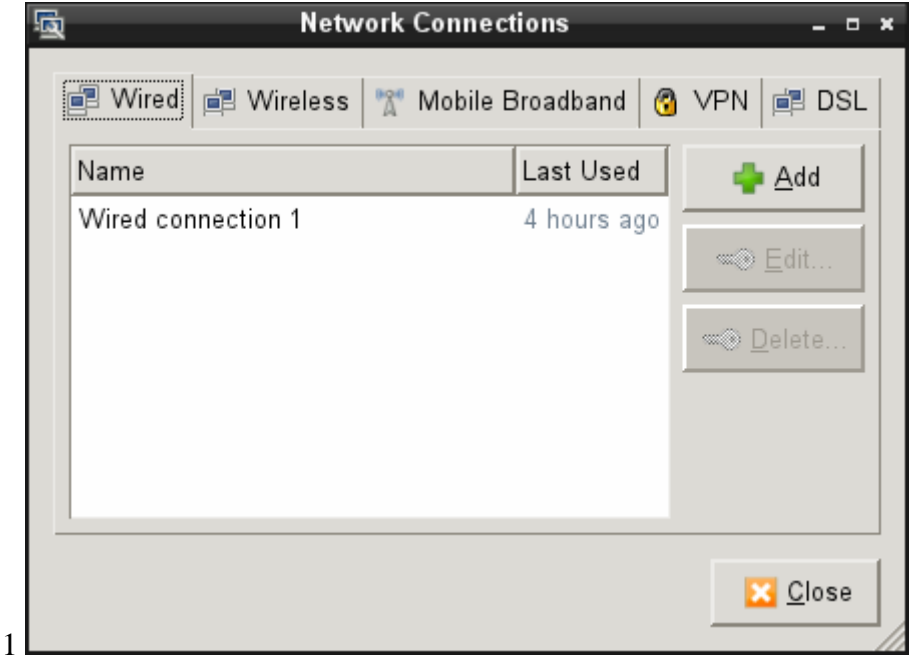
Click on your network manager and choose „UHH“ from the menu of available WLAN.:



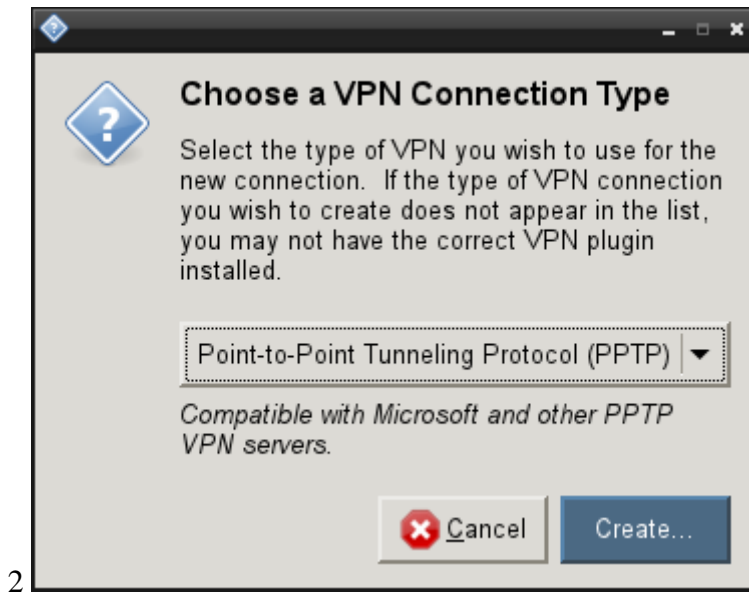
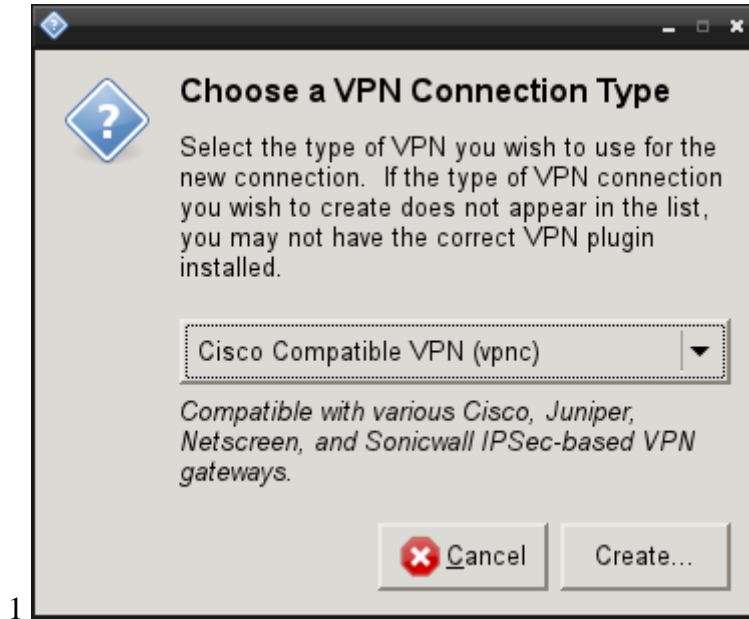
In the same menu, choose “VPN Connections” and there “Configure VPN”:



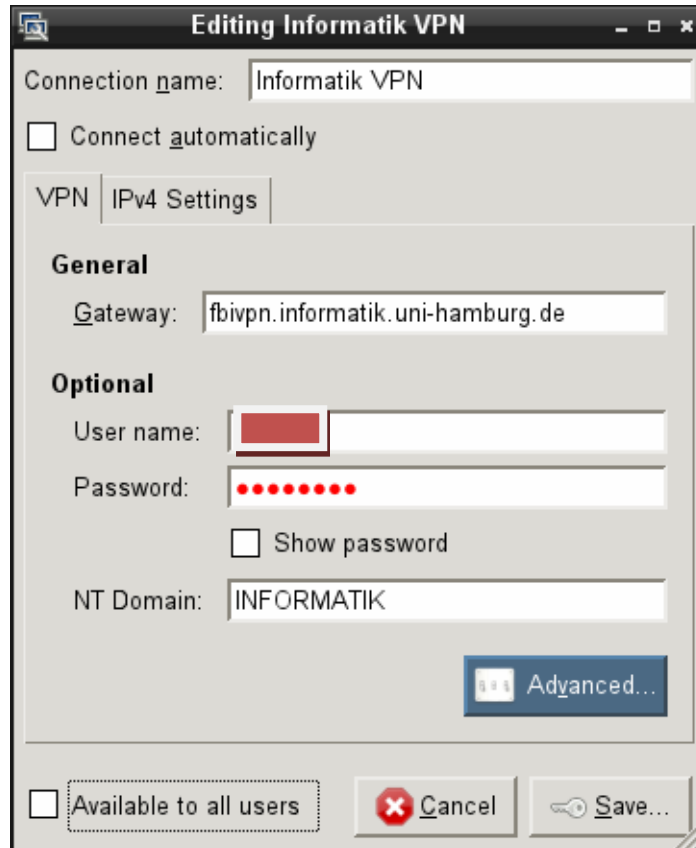
In the upcoming window, choose the “VPN” tab, then click on “Add”, as below in fig. 1 and 2:



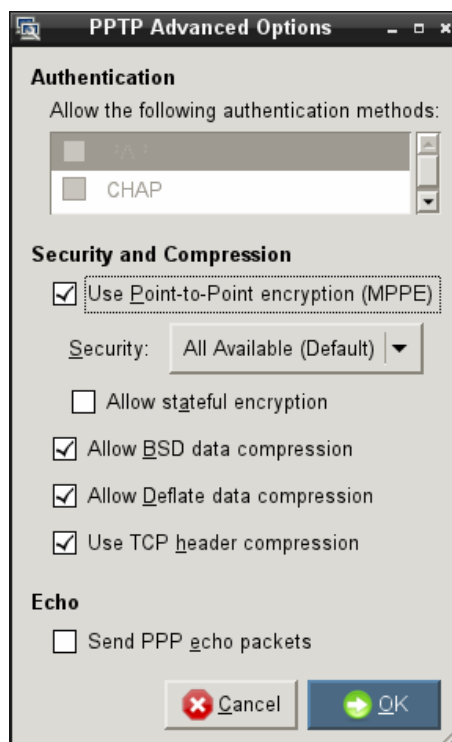
In the upcoming VPN Connection Type Window, choose PPTP and click “Create”, as below:



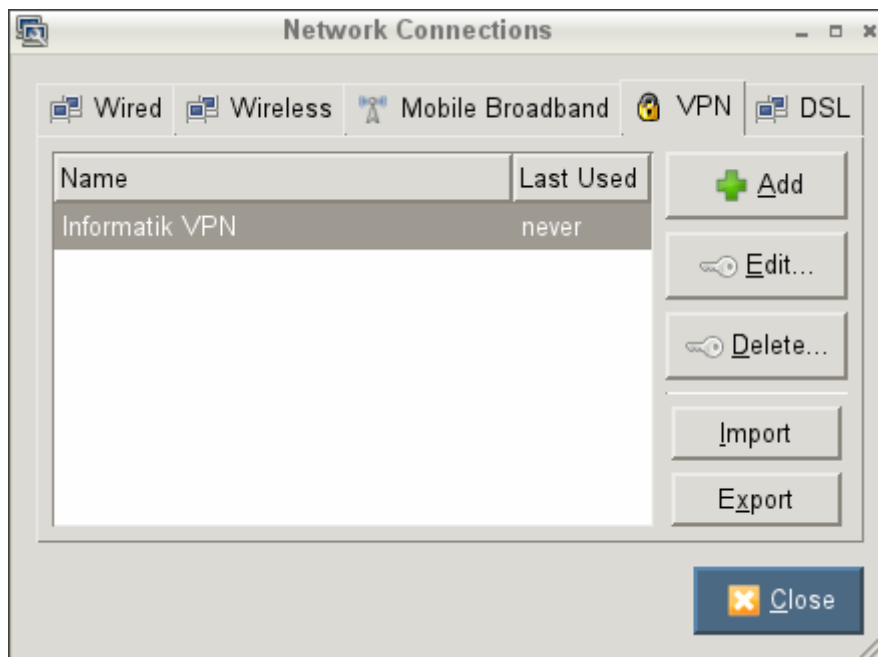
In the Editing VPN input mask, enter a Connection name of your choice (Informatik VPN in the example), enter fbivpn.informatik.uni-hamburg.de under Gateway, the user name (Benutzername) and password (Passwort) from the form you received and enter INFORMATIK as the domain, then click “Advanced“:



Under Advanced options, tick “Use Point-to-Point encryption (MPPE):



You will then get the “Network Connections” window again, where you click “Close”.



Go back to your network manager and choose your newly created connection from the VPN Connections:



You should now be connected to the Internet.